



1511 Locust St # 107 St Louis, MO 63103-1843

\$159,000

BACK ON THE MARKET! BUYER'S FINANCING FELL THRU! VERY MOTIVATED SELLERS! Secured entry that leads to the work out facility and common area patio containing 2 hot tubs, BBQ pit, tables & chairs. You walk into the unit to a long hallway that leads to the main living area. This open floor plan has a large kitchen with custom cabinets, center island, granite counters and stainless Maytag appliances (all kitchen appliances included in the sale). The kitchen opens to the living room which is raised two steps up onto a platform. The second bedroom is off the kitchen. The bathroom contains 12 tile floors. The tub and shower are separate and there is a double bowl sink. The master bedroom has a large walk in closet with custom shelving and drawer space. This loft contains washer/dryer hook-ups in the unit and there is also additional locked storage in the basement. 1 covered garage space included. Water, MSD and trash included in the association fee. Electric bills average \$50/month.

Directions: Located Downtown on the corner of 15th Street and Locust Street. Directly across the street from the downtown YMCA.

ML#:80014455	Age: 3	# of Rooms	4
Property Type	Condo/Coop/Villa	Main Full Baths	1
Property SubType	Condo/Cluster Coop	Building Style	High-Rise-4+ Stories
Tax ID	0827-00-0811-0	Type	Condo
Style	Loft	Location	Ground Level, Interior Unit
Beds: 2	Baths : 1	# Garage Spaces	1
Approx Square Feet	1226 County Records	Basement Desc.	Poured Concrete, Storage/ Locker
Price/SqFt	\$138.58	Living Room	17x15 Level: M
Map Coordinates	E20, 27	Kitchen	17x14 Level: M
County	St Louis City	Master Bedroom	12x14 Level: M
Subdivision/Complex	Annex Lofts	2nd Bedroom	12x11 Level: M
Taxes Paid	\$2125	Cooling	Central-Electric
Elementary School	City	Heating	Electric
Jr. High School	City	Condo Fee	\$235
Sr. High School	City		

Angela Velazquez
 Primary: 314-631-3306
 Secondary: 314-393-6991

DECA Realty Co.
 9630 Gravois Rd Ste 101
 Saint Louis, MO 63123
 314-631-3306
 Fax: 314-631-6680

Presented By: Other:

E-mail: avelazquez@decarealty.com
 Web Page: www.decarealty.com

October 2009



1247 Mckinley Ave Rock Hill, MO 63119

\$154,900

Great starter home. Priced right for Rock Hill.

Directions: Off Manchester Road just west of Rock Hill Road. North on McKinley.

ML#:10017455	Age: 65	Sr. High School	Webster Groves
Property Type	Residential	# of Rooms	5
Property SubType	Residential	Main Full Baths	1
Tax ID	21L-33-0820	# Garage Spaces	#1
Style	Ranch	Basement Description	Full, Partially Finished, Poured Concrete
Beds: 2	Baths : 1	# Fireplaces	#1
Approx Square Feet	881 County Records	Lot Description	Fencing
Lot Sq Ft (approx)	8246	Living Room	12x16 Level: M
Lot Acres (approx)	0.189	Dining Room	7x8 Level: M
Price/SqFt	\$175.82	Kitchen	10x10 Level: M
Cross Street	Hillchester	Master Bedroom	11x12 Level: M
Map Coordinates	Q22, 35	2nd Bedroom	9x10 Level: M
County	St Louis	Laundry Room	9x13 Level: L
Subdivision/Complex	Eickermanns	Cooling	Central-Electric
Taxes Paid	\$2384	Heating	Electronic Air Fltrs, Forced Air, Humidifier
Elementary School	Avery		
Jr. High School	Hixon		

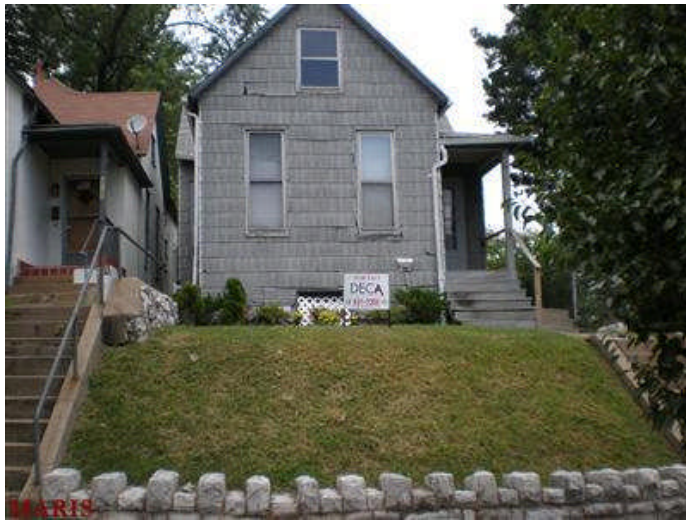
Jim Young
 Primary: 314-631-3306
 Secondary: 314-280-4695
 Other:

DECA Realty Co.
 9630 Gravois Rd Ste 101
 Saint Louis, MO 63123
 314-631-3306
 Fax: 314-631-6680

Presented By:

E-mail: jjyoung@decarealty.com

May 2010



4121 Wyoming St St Louis, MO 63116-3934

\$24,900

House considered for National Register of Historic Places. If listed, federal tax provisions may apply.

ML#:10045311	Age: 118	County	St Louis City
Property Type	Residential	Subdivision/Complex	Oak Hill Improv Company's
Property SubType	Residential	Taxes Paid	\$413
Tax ID	4160-00-0250-0	Elementary School	Mann
Style	Bungalow/Cottage	Jr. High School	Mann/Fanning
Beds: 2	Baths : 1	Sr. High School	Roosevelt
Approx Square Feet	745 County Records	# of Rooms	4
Lot Sq Ft (approx)	3389	Main Full Baths	1
Lot Acres (approx)	0.078	Basement Description	Partial, Stone/Rock
Price/SqFt	\$33.42	Cooling	Central-Electric
Cross Street	Oakhill	Heating	Forced Air
Map Coordinates	I23, 37		

Jim Young

Primary: 314-631-3306

Secondary: 314-280-4695

Presented By:

E-mail: jjyoung@decarealty.com

August 2010

DECA Realty Co.

9630 Gravois Rd Ste 101

Saint Louis, MO 63123

314-631-3306

Fax: 314-631-6680



7340 Sharp Ave St Louis, MO 63116-3040

\$159,500

Just what your buyer(s) have been looking for. Bring your most discriminating buyer(s) to this freshly remodeled all brick, ready to move into ranch. Great South St. Louis neighborhood just blocks to Carondelet Park, schools, shopping & I-55. New kitchen has stainless steel appliances, maple cabinets and ceramic tile floor. Main full bath has ceramic tile tub surround and floor, new vanity and linen closet. Refinished hardwoods in LR, DR, 3BR's and hallway. New carpet in main level family room with large, walk-in closet (could be 4th BR if needed, but can't count in MLS as BR due to location off of garage). Remodeled lower level has 1/2 bath with ceramic tile floor and new vanity. A second family room 21x13 and a game room 14x8 are carpeted and ready for family fun. Separate laundry room with ample storage, cabinets with countertop, cedar closet and workbench. Newer vinyl windows throughout whole house. 200 Amp. panel box. Much, much more. Owner/broker. Priced to create activity.

Directions: I-55 to Loughborough. West on Loughborough to left on Sharp. OR Germania to Sharp. House is located on Sharp between Carondelet Park and River Des Peres.

ML#: 10044666	Age: 54	Low Half Baths	1
Property Type	Residential	# Garage Spaces	#1
Property SubType	Residential	Basement Description	Bathroom in LL, Full, Partially Finished, Poured Concrete, Rec/Family Area, Storage/Locker
Tax ID	6441-00-0150-0	Lot Description	Fencing, Level Lot, Streetlights
Style	Ranch	Living Room	15x14 Level: M
Beds: 3	Baths : 1.50	Family Room	14x11 Level: M
Approx Square Feet	969 County Records	Dining Room	9x9 Level: M
Lot Sq Ft (approx)	5812	Kitchen	11x8 Level: M
Lot Acres (approx)	0.133	Master Bedroom	13x10 Level: M
Price/SqFt	\$164.60	2nd Bedroom	11x9 Level: M
Map Coordinates	K27, 49	3rd Bedroom	10x8 Level: M
County	St Louis City	Recreation Room	21x13 Level: L
Subdivision/Complex	Granbury Place	Laundry Room	20x11 Level: L
Taxes Paid	\$1719	Cooling	Ceiling Fan, Central-Electric
Elementary School	City/private	Heating	Forced Air
Jr. High School	City/Private		
Sr. High School	City/Private		
# of Rooms	7		
Main Full Baths	1		

Presented By:

John Bumb
Primary: 314-713-3444

DECA Realty Co.

9630 Gravois Rd Ste 101
Saint Louis, MO 63123
314-631-3306
Fax: 314-631-6680

August 2010

E-mail: jbumb@decarealty.com



5466 Morganford Rd St Louis, MO 63116-2337

\$234,000

Six unit in desirable South City location. Near Carondelet Park, Shopping and access to I-55. All units have central air. Four garage spaces. Can be packaged with MLS numbers 10040443 and 10040429

Directions: One block from Bates

ML#:10040457	Age: 81	Elementary School	City
Property Type	Multi-Family 5+	Jr. High School	City
Property SubType	Multi-Family 5+	Sr. High School	City
Tax ID	6263-00-0220-0	Type	Apt Bldg/Exterior En, Flat/ Shotgun
Approx Square Feet	2499 County Records	Location	City
Lot Sq Ft (approx)	6328	Building Style	Low/1-2
Lot Acres (approx)	0.145	Parking	Parking Garage(s)
Price/SqFt	\$93.64	Sale Includes	Building & Land
Map Coordinates	K26, 49	Cable Available	Yes
County	St Louis City	Cooling	Central-Electric
Subdivision/Complex	Bates Street Terrace Add	Heating	Forced Air
Taxes Paid	\$2256		

Martin Carr

Primary: 314-631-3306

Secondary: 314-280-4696

Presented By:

E-mail: mccarr@decarealty.com

August 2010

DECA Realty Co.

9630 Gravois Rd Ste 101

Saint Louis, MO 63123

314-631-3306

Fax: 314-631-6680



4922 Devonshire Ave St Louis, MO 63109-2401

\$174,000

Four Family near Kingshighway. rents are in the upper \$400's. All units have central air. Windows are all wrapped on the exterior. Three room units plus bonus room. Can be packaged with MLS numbers 10040457 and 10040429 for a total of 14 units

Directions: Kinshighway south of Chippewa to west on Devonshire

ML#:10040443	Age: 95	Subdivision/Complex	Southampton Add
Property Type	Multi-Family 2-4	Taxes Paid	\$1588
Property SubType	Multi-Family 2-4	Elementary School	City
Tax ID	5175-00-0210-0	Jr. High School	City
Approx Square Feet	3264	Sr. High School	City
Lot Sq Ft (approx)	6352	Type of Units	4-Family
Lot Acres (approx)	0.146	Parking Description	Off Street
Price/SqFt	\$53.31	Cable Available	Yes
Map Coordinates	K24, 37	Cooling	Central-Electric
County	St Louis City	Heating	Forced Air

Martin Carr

Primary: 314-631-3306

Secondary: 314-280-4696

Presented By:

E-mail: mscarr@decarealty.com

August 2010

DECA Realty Co.

9630 Gravois Rd Ste 101

Saint Louis, MO 63123

314-631-3306

Fax: 314-631-6680



5524 Chippewa St St Louis, MO 63109-1628

\$174,000

Four family near Hampton village. All units have central air and appliances. Three occupied units. Can be packaged with MLS numbers 10040457 and 10040443 for 14 total units

Directions: Chippewa east of Hampton

ML#:10040429	Age: 68	Taxes Paid	\$2115
Property Type	Multi-Family 2-4	Elementary School	City
Property SubType	Multi-Family 2-4	Jr. High School	City
Tax ID	6317-00-0070-0	Sr. High School	City
Approx Square Feet	3264 County Records	Type of Units	4-Family
Price/SqFt	\$53.31	Parking Description	Off Street
Cross Street	January	Cable Available	Yes
Map Coordinates	K24, 37	Cooling	Central-Electric
County	St Louis City	Heating	Forced Air
Subdivision/Complex	Chatsworth Add		

Martin Carr

Primary: 314-631-3306

Secondary: 314-280-4696

Presented By:

E-mail: mccarr@decarealty.com

August 2010

DECA Realty Co.

9630 Gravois Rd Ste 101

Saint Louis, MO 63123

314-631-3306

Fax: 314-631-6680



3257 Michigan Ave St Louis, MO 63118-2805

\$99,900

Perfect building for investors! 2 family building. Both units are occupied. This is a must see building. The 2nd and 3rd floors are one unit (3 bedroom / 1.5 baths). Agents bring your buyers, this won't be on the market long.

Directions: Michigan and Utah

ML#:10045322	Age: 116	Subdivision/Complex	City Commons
Property Type	Multi-Family 2-4	Taxes Paid	\$507
Property SubType	Multi-Family 2-4	Elementary School	city
Tax ID	1501-00-0270-0	Jr. High School	city
Approx Square Feet	2880 County Records	Sr. High School	city
Lot Sq Ft (approx)	3278	Type of Units	2-Family
Lot Acres (approx)	0.075	Parking Description	Off Street
Price/SqFt	\$34.69	Cooling	None
Map Coordinates	H23, 38	Heating	Forced Air
County	St Louis City		

Angela Velazquez
Primary: 314-631-3306
Secondary: 314-420-5488

Presented By:

E-mail: avelazquez@decarealty.com

August 2010

DECA Realty Co.
9630 Gravois Rd Ste 101
Saint Louis, MO 63123
314-631-3306
Fax: 314-631-6680



5212 Bancroft Ave St Louis, MO 63109

\$129,500

Great starter home with comfortable City living. Large living room, kitchen and dining on the main level. Kitchen and dining have new laminate flooring and the kitchen has a walk out to a new 16x8 deck. Two bedrooms and all new bath on the second floor with ceramic tile shower. New carpeting in the bedrooms, new paint and ready for move in.

Directions: Chippewa to South on Macklind to left on Bancroft

ML#:10049602	Age: 90	Jr. High School	Long
Property Type	Residential	Sr. High School	Roosevelt
Property SubType	Residential	# of Rooms	5
Tax ID	5158-00-0260-0	Upp Full Baths	1
Style	2 Story	Basement Description	Full, Walk-Out
Beds: 2	Baths : 1	Lot Description	Level Lot, Partial Fencing, Sidewalks, Streetlights
Approx Square Feet	1112 County Records	Living Room	18x11 Level: M
Lot Sq Ft (approx)	3807	Dining Room	10x9 Level: M
Lot Acres (approx)	0.087	Kitchen	13x7 Level: M
Price/SqFt	\$116.46	Master Bedroom	16x11 Level: U
Map Coordinates	K24, 37	2nd Bedroom	11x9 Level: U
County	St Louis City	Cooling	Central-Electric
Subdivision/Complex	Christys ADD	Heating	Forced Air
Taxes Paid	\$1244		
Elementary School	Buder		

Martin Carr

Primary: 314-631-3306

Secondary: 314-280-4696

Presented By:

E-mail: mccarr@decarealty.com

August 2010

DECA Realty Co.

9630 Gravois Rd Ste 101

Saint Louis, MO 63123

314-631-3306

Fax: 314-631-6680